

Like 0

Share

Share:

Tweet

- 
- 
- 
- 



## Gardening Newsletter

Aug 29, 2019

Dear Friends,

Here is the 306th issue of our weekly gardening newsletter for Houston, the Gulf Coast and beyond. We really appreciate all of our readers hanging in there with us, sharing stories and inspiring us in so many ways.

Thanks so much!

This newsletter is a project of The Lazy Gardener, Brenda Beust Smith & John Ferguson. (John is with [Nature's Way Resources](#)). We also have a great supporting cast of contributing writers and technical specialists who will chime in and tweak away regularly. We would love to keep receiving your input on this newsletter, comments, suggestions, questions. Email your thoughts to: [lazygardenerandfriends@gmail.com](mailto:lazygardenerandfriends@gmail.com). Thanks so much for your interest.

Please sign yourself up to receive this newsletter by clicking this link: ["Join Our Mailing List"](#). We will never sell or share our mailing list to protect the privacy of our subscribers.

Enjoy!

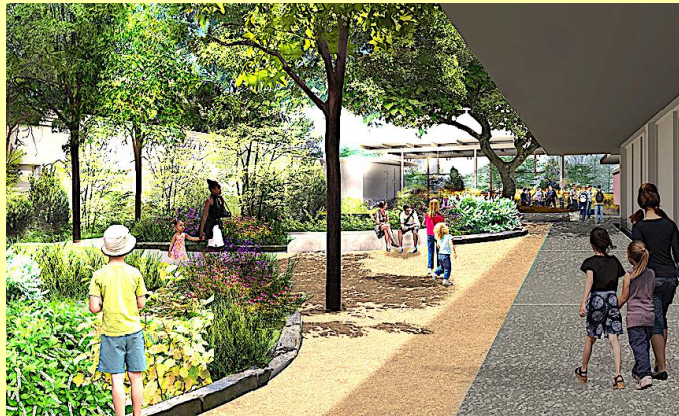


## HOUSTON ARBORETUM FACELIFT ... DEMYSTIFYING ORCHIDS

*All my life through, the new sights  
of Nature made me rejoice like a child.*  
-- Marie Curie

**BY BRENDA BEUST SMITH**

Our Houston Arboretum & Nature Center, sited on what was once a World War I Army Training Camp site, is undergoing major renovations and expansions.



HANC is a 155-acre urban nature sanctuary on Memorial Park's western edge, in the southeast quadrant of the intersection of I-610 and I-10 west. This private non-profit educational facility, operated on city land, was one of the first nature education facilities for children in the State of Texas. It has the unique distinction of being located at an unusual juncture of three different ecological regions: Piney Woods, Post Oak Savanna & Gulf Coast Prairie.

We can look forward to an enlarged Nature Shop, new classrooms, updated restrooms and a new entrance, which is actually being moved back to the western "front" where it was originally located in 1967.





*The Arboretum's original entrances, left, and existing entrance*

All this will take place in Phase 1, now through November. Phase II will bring classroom updates, plus a new outdoor classroom and new Discovery Room. The Discovery Room favorites such as the wetland wildlife aquarium, microscopes and biofacts will remain, as will the old Discovery Room's iconic tree just in a delightful re-imagined version with whimsical animal illustrations.



Kiddos will love the Prairie Underground crawl-through and new interactive exhibits spotlighting flora and fauna found in the Arboretum's outside habitats.



One fascinating aspect will be the "bird-friendly" glass, embedded with a subtle crisscross pattern birds can detect, but not easily seen by human eyes. The goal: to help avoid window collisions, which unfortunately kill over 365 million birds annually in the U.S. alone.

Phase I will end November 2019 and, until then, a welcome kiosk at the current main entrance will still offer a few sale items, and hours will remain 9am-5pm.



The new Nature Playscape will highlight Arboretum habitats through discovery areas that invite hands-on exploration by all ages. Favorite elements – log hill, rope climb, and digging areas – will be accompanied by more spaces to

balance, build, tunnel, and explore. In the meantime, visit the new Willow Oak Playground east of the Nature Center building near Willow Oak Trail. The new Nature Playscape construction is expected to begin in early 2020.

Don't let all these projections stop you from visiting. Grounds and trails will still be open 7am-dusk, including the new Ravine Trail. The Nature Center will stay open during the overhaul. Fall programming continues as planned, including:

- **Roving Naturalists** — Saturdays, 10am–2pm (Guided hikes viewing flora & fauna around the Nature Center building)
- **Guided Nature Hikes** — Saturdays, 10am & 11am (Stroller-friendly, insider Arboretum view hikes for families with young children)

Register for above hikes online: [houstonarboretum.org](http://houstonarboretum.org). Also coming up:

- **Open Houses** for potential volunteers --10am-noon on Sept. 4 (docent naturalists) and Sept. 7 (general volunteer opportunities).
- **Medicinal Wild Plants** — Sept. 28, 9am
- **ArBOOretum 2019** — Oct. 19, 10am
- **2019 Fall Plant Sale** — Oct. 25-26, 9am

*Master plan partners include Forney Construction, Design Workshop, Main Street Design, Garza Site Development, Reed Hilderbrand and Sparq1200.*

*Details: [houstonarboretum.org/support/vision-and-objectives/](http://houstonarboretum.org/support/vision-and-objectives/)*

*The Houston Arboretum, 4501 Woodway Dr., Houston, 77024. 713-681-4833.*

\* \* \*

**INTIMIDATED BY ORCHIDS? DON'T BE!** These elegant flowers often evoke a mysterious world to even experienced gardeners who have never actually grown one. It can be somewhat intimidating to be faced with a wide variety of these often ethereal flowers. How about a quick lesson so next time you can speak with knowledge? Galveston Bay Orchid Society provided these pointers below of varieties they'll have available at their Sept. 14-15, 2019 Show & Sale at the Hilton Houston NASA Clear Lake

**PHALAENOPSIS** This popular orchid makes an ideal indoor, low-care plant. A bright window, indirect light and once a week heavy watering keeps blooms for several months. Dry thoroughly between watering, lightly fertilized for rebloom next year. To trigger reblooming: place outdoors a couple of weeks when nights are in the 50's. They come in almost every color in the rainbow.



#### **PAPHIOPEDILUM / Phragmipedium**

'Lady Slippers' are great windowsill companions for phalaenopsis. These like moist feet all the time. In nature they are found along stream beds. Usually bloom once/year only on new growth but many have beautiful





mottled foliage between bloomings. Flowers can last for over a month.

**ONCIDIUM** Although 'dancing ladies' are readily available, some love indoor conditions similar to the phalaenopsis, while others do better outside under higher light and temperatures. Be sure to ask! Like phalaenopsis, most oncidium want to go dry between waterings. They come in a wide variety of colors and many have sweet fragrance.



#### **DENDROBIUM**

are well suited for outdoors, require high light and do well in heat and humidity. They produce long-lasting blooms in many colors. Most love to be "pot bound" and can grow large with little maintenance. Flowers are used for Hawaiian necklace leis and last long as a cut stem.



#### **CATTLEYA**

do well outdoors, but generally not below 50. Large fragrant flowers made them "most popular orchid" in the '50s as corsage s. These usually bloom at the same time each year. A blooming plant purchased at the GBOS Show will likely bloom at this time next year on new growth.



#### **VANDA**

originated in Southeast Asia where conditions are tropical year-round. Very easy to grow along the entire Gulf region, but do not like temperatures below 50°. They grow quickly and have big sprays of flowers: some huge, some small, some fragrant, and in all colors of the rainbow.

**Galveston Bay Orchid Society' Show & Sale, Sept. 14-15,  
9am- 5pm Sat., 9am-3pm Sun., Hilton Houston NASA Clear Lake, 3000 Nasa Pkwy  
[galvestonbayorchidsociety.org](http://galvestonbayorchidsociety.org)**

#### **LOOKING FOR CLUB SPEAKERS & PROGRAMS?**

"LAZY GARDENER SPEAKER LIST" — free — [lazygardener@sbcglobal.net](mailto:lazygardener@sbcglobal.net)

Brenda's column in the LAZY GARDENER & FRIENDS HOUSTON GARDEN  
NEWSLETTER

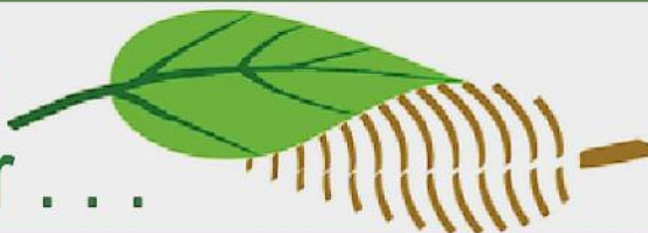
is based on her 40+ years as the Houston Chronicle's Lazy Gardener

**[CLICK HERE](#) for PDFs OF PAST LG&F NEWSLETTERS**

We hope you will repost & share with anyone and everyone!

\* \* \*

John's  
Corner . . .



## NEWS FROM THE WONDERFUL WORLD OF SOIL AND PLANTS # 96

I was at the Environmental Fair last week put on by the Lutheran churches in our area and was listening to a professor from the University of Houston on biodiversity. She stated that the Earth's Eco-system services (clean air, water, oxygen, etc.) are worth \$147 Trillion per year to society. She also pointed out that humans consume 20% of all Eco-system services, yet humans are only less than 1% of the earth's biomass.

It seems like new information on the dangers of Roundup (glyphosate) are coming out daily now that Monsanto's Black Operations group has been exposed by the French government and disassembled.

A couple of good articles on the lies about Roundup are:



Among them are journalist Carey Gillam, the nonprofit U.S. Right to Know (USRTK) and singer-songwriter Neil Young, whose 2015 album,

"The Monsanto Years," was an artistic critique of the company. "The records ... show Monsanto adopted a...

[Read more](#)

[articles.mercola.com](http://articles.mercola.com)



Pesticide and pharmaceutical giant Bayer is facing approximately 18,400 U.S. lawsuits from individuals alleging that glyphosate, the active ingredient in Roundup herbicide, caused them to develop cancer. The retail giants Home Depot and Lowe's...

[Read more](#)

[articles.mercola.com](http://articles.mercola.com)

**A** recent study reported in Science News stated that planting trees on 0.9 billion hectares of land could trap about two-thirds of the carbon released since the start of the industrial age. This is an area roughly the size of the USA.

The Journal of Experimental Biology (July 2019) had a recent paper on how a beneficial fungus ( *Ophiocordyceps unilateralis*) kills carpenter ants. This fungus may sit on a leaf or twig and when the ant takes a bite, the fungus colonizes the ant causing its jaws to lock up and freeze. The fungus then feeds on the ant devouring it and, over time, a fungal stalk grow out and sends out spores that rain down on an ants below, infecting more ants.

## Native Milkweed Collaboration



Natures Way Resources has partnered with The Woodlands Township and volunteers from the Heartwood Chapter of Texas Master Naturalists to grow milkweed to support the Pollinator Habitat Initiative Program of The Woodlands Township.

This long-term collaboration will supply The Woodlands Township with milkweed plants for projects in open areas, select parks, grounds of local nonprofit facilities and other appropriate locations where Pollinator Habitat Gardens are being created to fulfill the Township's desire to support the nationwide initiative to increase and enhance gardens for pollinators in general, and the monarch butterfly in particular.

This collaboration is expected to produce up to 13,000 milkweed plants of several different species (Green, Common and Tuberosa) over the summer and fall of 2019, and to continue to create an ongoing supply of this critical plant for monarchs over the next few years.

Not only has Natures Way Resources provided the growing space for this project, but has also donated all supplies for setup, over 10 yards of organic high quality soil, all pots and trays and over 100 hours of support and guidance given by nursery personnel.

If you are not a resident of The Woodlands and are looking for milkweeds, Natures Way Resources currently has *Asclepias curassavica* (Tropical milkweed) and *Asclepias tuberosa* (Butterfly Weed) available for sale. We will also have *Asclepias viridis* (green milkweed) and *Asclepias syriaca* (common milkweed) available for sale in the fall. All plants were grown organically by nursery personnel and no pesticides have been used.

Those who live in The Woodlands and have registered their gardens will receive the milkweed plants for free, in addition to most of them being planted in public spaces throughout The Woodlands. "Those who have already signed up and received their vouchers can pick up their milkweed plants either at Nature's Way Resources or Alspaugh's Ace Hardware of The Woodlands along Kuykendahl Road. Also, a voucher can also be obtained at Woodlands Landscaping Solutions on Sept. 28 at Rob Fleming Park.

To learn more about the milkweed giveaway or Plant for Pollinators Program <https://www.thewoodlandstownship-tx.gov/.../Plant-for-Pollina...> of the Township, contact the Environmental Services Department at [enviro@thewoodlandstownship-tx.gov](mailto:enviro@thewoodlandstownship-tx.gov) or call 281-210-3800.

*Asclepias* (milkweed) are sun-loving plants that are essential perennials for monarch butterflies, providing food for caterpillars and nectar for adult butterflies. They remain dormant until later in the spring than many other plants and bloom from mid-summer into early fall. Their milky sap makes them rabbit and deer resistant. But, they have a quirky nature, requiring patience and acceptance.

For plant care, milkweed can be divided into two groups: *Asclepias tuberosa* (orange butterfly milkweed) and all other species, including *Asclepias syriaca*



(common milkweed) and *Asclepias viridis* (green milkweed) and *Asclepias curassavica* (tropical or Mexican milkweed).

***Asclepias tuberosa*** : Plant in sandy or gravelly soil with a few handfuls of compost. Do not plant into rich, highly-amended soil. Requires full sun and infrequent, deep waterings.

**All Other *Asclepias*** : Can tolerate a wide range of soil types, gravel mulches including clay (can also handle more compost enriched soils). Full to part sun (at least 4-6 hours). They can also handle more moisture.

When planting, and after planting, do not divide or disturb the milkweed's long, carrot-like tap root. Oftentimes, milkweed will not grow much its first season in the ground. Take care not to overwater young transplants. After their second growing season, the plants will begin to get bigger and more robust and need deep, but infrequent watering.

To encourage re-seeding, leave stems intact over the winter. In mid-spring, remove old stems just above ground level. Fertilize just once in fall with organic fertilizer (like MicroLife). Naturalized plants don't need additional fertilization.

Most milkweed species are late to wake up in the spring. BE PATIENT! The roots and woody crown are alive, just waiting for consistently warm weather to wake-up and grow.

Insecticides should never be used in or surrounding pollinator habitat. Limit use of herbicides within and surrounding the habitat only to control invasive or noxious weeds. Yellow aphids and milkweed bugs are common on all milkweeds.

To learn about control or information on milkweeds in general, please visit any of the sites listed below:

<https://www.monarchwatch.org/>

<https://monarchbutterflygarden.net/>

<https://www.saveourmonarchs.org>

<https://monarchjointventure.org>

<https://journeynorth.org>

<https://gardenerspath.com/plants/perennial/asclepias/>

<https://www.wildflower.org/.../TPWD-Identification-Milkweeds-...>

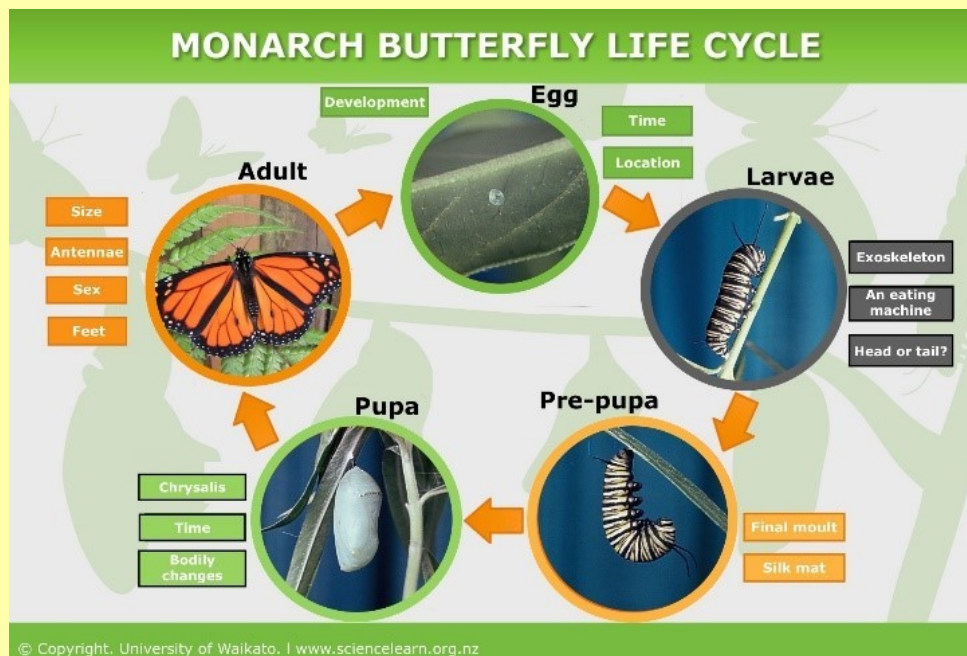
<https://www.joyfulbutterfly.com>

<https://www.houstonchronicle.com/.../Free-milkweed-giveaway-i...>

[#natureswayresources](#) [#nativemilkweed](#) [#tropicalmilkweed](#)

[#mexicanmilkweed](#) [#plantforpollinator](#) [#thewoodlandtownship](#)

[#monarchbutterfly](#) [#butterflyhostplant](#)



Common Milkweed ( *Asclepias syriaca* )



Green Milkweed ( *Asclepias viridis* )





**Butterfly Weed ( *Asclepias tuberosa* )**



**Tropical or Mexican Milkweed ( *Asclepias curassavica* )**



**Milkweed aphids**



**Milkweed Bug**

\* \* \*

## *Have You Tried . . .* **VITEX**

**(*Vitex agnus-castus* -- "Chaste Tree")**

Also called "Chaste Tree," this large sun-loving shrub/small tree is low maintenance, heat/drought tolerant, deer-resistant and a favorite of butterflies, hummers, bees and other pollinators. Fragrant lavender spikes July - September (or longer). Totally ignore or prune to ground in winter for bushier growth. Also works well as container plant.



*Vitex agnus-castus* is carried by *Nature's Way Resources* ( [Map](#) ).



*Or . . . contact our sponsor, Montgomery Pines Nursery in Willis, our other sponsors below or your neighborhood nurseryman for possible sources.*

*\* \* \**

## LAZY GARDENER & FRIENDS HOUSTON GARDEN NEWSLETTER CALENDAR EVENTS

### GARDEN/PLANT EVENTS ONLY

*Events are in Houston unless otherwise noted. No events are picked up from newsletter, etc. Individual events must be submitted in exact format below to [lazygardener@sbcglobal.net](mailto:lazygardener@sbcglobal.net)*

SAT., AUG. 24: FALL & WINTER VEGETABLE GARDENING CLASS by JIM MAAS, PAT CORDRAY & PAUL NESRSTA, 10am, Maas Nursery, 5511 Todville Rd., Seabrook. \$45. 281-474-2488, [maasnursery.com](http://maasnursery.com)

TUES., AUG. 20: ADDING QUESNELIA TO YOUR COLLECTION by CHARLIE BIRDSONG, 7pm, West Gray Multi-Service Center, 1475 West Gray. Free. Bromeliad Society/Houston event. [Bromeliadsocietyhouston.org](http://Bromeliadsocietyhouston.org)

TUES., AUG. 20: FALL VEGETABLES, 6:30-8:30pm, Spring Branch Memorial Library, 930 Corbindale. Free. Harris County Master Gardener event. 713-274-0950; [hcmga.tamu.edu](http://hcmga.tamu.edu)

SAT. AUG 24: COMPOSTING by JIM GILLIAM, 1-3 pm, AgriLife Extension Office, Carbide Park, 4102-B Main St./FM 519, La Marque. Free. Galveston County Master Gardener event. Register first: [galvcountymgs@gmail.com](mailto:galvcountymgs@gmail.com), 281-309-5065, [aggie-horticulture.tamu.edu/galveston/index.html](http://aggie-horticulture.tamu.edu/galveston/index.html)

SAT., AUG. 24: FALL ORGANIC VEGETABLE GARDENING CLASS, 9am-Noon, The Woodlands Emergency Training Center, 16135 IH-145 South, The Woodlands. Free. Register: [thewoodlandstownship-tx.gov/environment](http://thewoodlandstownship-tx.gov/environment)

WED., AUG. 28: BACKYARD TRANSFORMATION by DICK & PHYLLIS MCEUEN, 7:30pm, Metropolitan Multi-Services Center, 1475 West Gray. Free. Houston Cactus & Succulent Society. [www.hcsstex.org](http://www.hcsstex.org)

SAT. AUG 31: BACKYARD CITRUS by ROBERT MARSHALL, 10:30 am-12:30 pm; TEXAS TUFF PLANTS FOR THE GULF COAST by MARIE LEAL, 1:30-3:30 pm. Friendswood Public Library, 416 S. Friendswood Dr., Friendswood. Galveston County Master Gardener event. Register: [galvcountymgs@gmail.com](mailto:galvcountymgs@gmail.com), call 281-309-5065, [aggie-horticulture.tamu.edu/galveston/index.html](http://aggie-horticulture.tamu.edu/galveston/index.html)

THURS., SEPT. 5, SHADY GINGERS & THEIR FLIRTY COMPANIONS BY LINDA GAY, 10 am, MUD Building, 805 Hidden Canyon Dr, Katy. Free Nottingham Country Garden Club event. [ncgctx.org](http://ncgctx.org)

THURS., SEPT. 5: ONE-ON-ONE TIME WITH HOUSTON GARDEN GURU RANDY LEMMON, 6:30 pm, Rosenberg Convention Center, 3825 TX 36 South, Rosenberg. Free. Texas Master Naturalist Coastal Prairie Chapter. 281-633-7033, [mmcdowell@ag.tamu.edu](mailto:mmcdowell@ag.tamu.edu), [txmn.org/coastal](http://txmn.org/coastal)

SAT., SEP 7: A PASSION FOR PLUMERIA (FRANGIPANI) by LORETTA OSTEEN, 1-3 pm, AgriLife Extension Office, Carbide Park, 4102-B Main St./FM 519, La Marque. Free. Galveston County Master Gardener event. Register: [galvcountymgs@gmail.com](mailto:galvcountymgs@gmail.com), 281-309-5065, [aggie-horticulture.tamu.edu/galveston](http://aggie-horticulture.tamu.edu/galveston)

SAT., SEPT. 7: The MERCER SOCIETY SPECIALTY PLANT SALE, 9am – 2pm, & CACTUS & SUCCULENTS by WALLY WARD, 11am, Mercer Botanic Gardens, 22306 Aldine-Westfield, Humble. Free. 713-274-4160.

SAT.-SUN., SEPT 7-8: GALVESTON HOME & GARDEN SHOW, 10am-6pm Sat., 11am-4pm Sun., Galveston Island Convention Center, 5700 Seawall Blvd. [galvestonhomeandgarden.com](http://galvestonhomeandgarden.com)

SAT, SUN., SEPT. 7 - 8: HOUSTON CACTUS & SUCCULENT SOCIETY FALL SHOW & SALE, 9am-5pm Sat., 9am-3pm Sun., Metropolitan Multi-Service Center, 1475 W. Gray, Houston, Texas, 77019. Free. [www.hcsstex.org](http://www.hcsstex.org)

Wed., SEPT. 11: DON'T LOSE YOUR PLANTS THIS WINTER, noon – 2pm, Mercer Botanic Gardens, 22306 Aldine-Westfield, Humble. Free. Register: 713-274-4160.

THURS., Sept.12: Blackspot, Bugs and Garden Safety by Dr. Allen Owings 7:00pm, Cherie Flores Pavilion, 1500 Hermann Drive, Houston 77004. Houston Rose Society event. Free. [www.houstonrose.org](http://www.houstonrose.org)

SAT., SEPT. 14: MINIATURE FAIRY GARDEN CLASS by JIM MAAS, PAT CORDRAY & BRENDA HESSE, 10am, Maas Nursery, 5511 Todville Rd., Seabrook. \$45. 281-474-2488, [maasnursery.com](http://maasnursery.com)

SAT., SEPT. 14: KITCHEN GARDENING by MARY DEMENY, 1-3 pm, AgriLife Extension Office, Carbide Park, 4102-B Main St./FM 519, La Marque. Free. Galveston County Master Gardener event. Register: [galvcountrymgs@gmail.com](mailto:galvcountrymgs@gmail.com) , 281-309-5065, [aggie-horticulture.tamu.edu/galveston](http://aggie-horticulture.tamu.edu/galveston)

SAT, SUN., SEPT. 14 - 15: GALVESTON BAY ORCHID SOCIETY SHOW/SALE, 9am-5pm Sat., 9am-3pm Sun., Hilton Hotel–NASA Clear Lake, 3000 E. NASA Parkway, Nassau Bay. Free. [galvestonbayorchidsociety.org](http://galvestonbayorchidsociety.org)

TUES., SEPT. 17: MAKING YOUR BROMELIADS PHOTOGENIC by JOHN EDMONSON, 7pm, Multi-Service Center, 1475 West Gray. Free. Bromeliad Society/Houston event. [bromeliadsocietyhouston.org](http://bromeliadsocietyhouston.org)

TUES., SEPT. 17: BIRDS OF SOUTHEAST TEXAS by GARY CLARK, 10am; St. Basil's Hall, 702 Burney Road, Sugar Land. Free. Sugar Land Garden Club event. [sugarlandgardenclub.org](http://sugarlandgardenclub.org)

THURS., SEPT. 19: NATIVE TREES IN THE LANDSCAPE: WHY AND HOW? by BRAD PHILLIPS, 6:45-8:30pm; American Red Cross, 2700 Southwest Fwy. Free. Native Plant Society of Texas/Houston Chapter event. [npsot.org/Houston](http://npsot.org/Houston)

FRI., SEPT. 20: HOLISTIC GARDENING WORKSHOP by Joseph Novak, Ph.,D. 10am-noon, 6 Fridays-Oct. 25, Rice University. \$325. Betty & Jacob Friedman Holistic Garden, Biosciences at Rice and Garden Club of Houston event. Register: [glasscock.rice.edu/community](http://glasscock.rice.edu/community)

SAT., SEPT. 21: GARDENING FOR HUMMINGBIRDS & BIRDS CLASS by JIM MAAS, PAT CORDRAY & KATHRYN COURTNEY, 10am, Maas Nursery, 5511 Todville Rd., Seabrook. \$45. 281-474-2488, [maasnursery.com](http://maasnursery.com)

SAT., SEPT. 21: ANNUAL WILDSCAPES WORKSHOP NATIVE PLANT EVENT, 8am-3:30pm; Anderson-Clarke Center, Rice University. \$45 before Aug. 31. Native Plant Society of Texas/Houston Chapter event. [npsot.org/Houston](http://npsot.org/Houston)

SAT., SEPT 21,: GROW YOUR OWN FALL VEGETABLES by FORT BEND COUNTY MASTER GARDENERS, 9am-11am, in the Bud O'Shieles Community Center, 1330 Band Rd., Rosenberg. [fortbend.agrilife.org/grow-your-own/](http://fortbend.agrilife.org/grow-your-own/); 281-342-3034; [brandy.rader@ag.tamu.edu](mailto:brandy.rader@ag.tamu.edu).

SAT. SEPT. 21: T-BUD GRAFTING OF CITRUS & FRUIT TREES by NANCY LANGSTON-NOH, 9-11 am; TURNING DIRT INTO SOIL – CREATING AN IDEAL SOIL by JIM GILLIAM, 1-3 pm, AgriLife Extension Office, Carbide Park, 4102-B Main St./FM 519, La Marque. Free. Galveston County Master Gardener event. Register: [galvcountrymgs@gmail.com](mailto:galvcountrymgs@gmail.com) , 281-309-5065, [aggie-horticulture.tamu.edu/galveston](http://aggie-horticulture.tamu.edu/galveston)

SUN., SEPT. 22: TIDBITS FROM 50 YEARS WITH DAYLILIES by Hershail Theilen, 2-3pm. Klein United Methodist Church, 5920 FM 2920, Spring. Cypress Creek Daylily Club event. Free. [cypresscreekdaylilyclub.simplesite.com](http://cypresscreekdaylilyclub.simplesite.com)

SAT., SEPT. 28: 14" METAL HANGING BASKET CLASS by JIM MAAS & PAT, 10am, Maas Nursery, 5511 Todville Rd., Seabrook. \$35. 281-474-2488, [maasnursery.com](http://maasnursery.com)

SAT., SEPT 28: LEAGUE CITY GARDEN CLUB GARDEN WALK: "UNDER THE MAJESTIC OAKS," 10:00 am-4:00 pm; Tickets \$15. [leaguecitygardenclub@gmail.com](mailto:leaguecitygardenclub@gmail.com); [leaguecitygardenclub.org](http://leaguecitygardenclub.org).

SAT. SEPT. 28: HERBS FOR THE GULF COAST by NANCY LANGSTON-NOH and BRIANA ETIE, 9-11 am, AgriLife Extension Office, Carbide Park, 4102-B Main St./FM 519, La Marque. Free. Galveston County Master Gardener event. Register: [galvcountrymgs@gmail.com](mailto:galvcountrymgs@gmail.com) , 281-309-5065, [aggie-horticulture.tamu.edu/galveston](http://aggie-horticulture.tamu.edu/galveston)

SAT. SEPT. 28: RAINWATER HARVESTING by NAT GRUESEN, 10:30 am-12:30 pm, Friendswood Public Library, 416 S. Friendswood Dr., Friendswood. Free. Galveston County Master Gardener event. Register: [galvcountrymgs@gmail.com](mailto:galvcountrymgs@gmail.com) , 281-309-5065, [aggie-horticulture.tamu.edu/galveston](http://aggie-horticulture.tamu.edu/galveston)

SAT., SEPT. 28: WOODLANDS LANDSCAPING SOLUTIONS, 9am - noon, Recreation Center, Rob Fleming Park, 6464 Creekside Forest Dr., The Woodlands. Free. [thewoodlandstowship-tx.gov/environment](http://thewoodlandstowship-tx.gov/environment)

SAT., SEPT. 28: ORCHID CARE 101, 9am–11am, Mercer Botanic Gardens , 22306 Aldine-Westfield, Humble. Free. Register: 713-274-4160.

TUES. & THURS., OCT. 1-NOV. 12, FALL 2019 FORT BEND COUNTY MASTER GARDENER CLASS, 9am-11am, AgriLife Extension office, 1402 Band Rd., Rosenberg. Register: [fbmg.org](http://fbmg.org), 281-633-7033 or [mmcdowell@ag.tamu.edu](mailto:mmcdowell@ag.tamu.edu) .

THURS., OCT. 3: BIBLICAL GARDENS by JEAN FEFER, 10 am, MUD Building, 805 Hidden Canyon Dr, Katy. Free, Nottingham Country Garden Club event. [ncgctx.org](http://ncgctx.org)

SAT., OCT. 5: SPRING BRANCH AFRICAN VIOLET CLUB ANNUAL PLANT SALE, 10am-4pm, Judson Robinson Jr. Community Center, 2020 Hermann Park Dr. Free. 281-682-1073, [cseverson57@comcast.net](mailto:cseverson57@comcast.net)

SAT., OCT. 5: HEALTHY LANDSCAPES = HEALTHY WATERWAYS CLASS, 8am - Noon, The Woodlands Emergency Training Center, 16135 IH-145 South, The Woodlands. Free. Register: [thewoodlandstowship-tx.gov/environment](http://thewoodlandstowship-tx.gov/environment)

SAT., OCT. 5: POLLINATOR FESTIVAL, 10am–4pm, Mercer Botanic Gardens, 22306 Aldine-Westfield, Humble. Free. 713-274-4160.

TUES., OCT. 8: GROWING PLUMERIAS, 7-9pm, Cherie Flores Garden Pavilion, 1500 Hermann Drive. Free. Plumeria Society of America event. [theplumeriasociety.org](http://theplumeriasociety.org)

WED., OCT. 9: SURPRISINGLY SPOOKY, MARVELOUSLY MYSTERIOUS PLANTS, noon– 2pm, [Mercer Botanic Gardens](http://Mercer Botanic Gardens) , 22306 Aldine-Westfield, Humble. Free. Register: 713-274-4160.



FRI., OCT. 11: PLANTS OF THE BIBLE by JEAN FEFER, 11:30am, Jim & JoAnn Fonteno Senior Education Center, 6600 Bissonnet St., Free. [pct3.com/Senior-Centers/Jim-JoAnn-Fonteno-Senior-Education-Center](http://pct3.com/Senior-Centers/Jim-JoAnn-Fonteno-Senior-Education-Center)

SAT. OCT 12: GALVESTON COUNTY MASTER GARDENER FALL PLANT SALE, 9am-1pm; SALE PREVIEW, 8am, Galveston County Fair Grounds, Jack Brooks Park-Rodeo Arena, Hwy 6 & Jack Brooks Road, Hitchcock. Free. [galvcountrymgs@gmail.com](mailto:galvcountrymgs@gmail.com), 281-309-5065, [aggie-horticulture.tamu.edu/galveston/index.html](http://aggie-horticulture.tamu.edu/galveston/index.html)

SAT. OCT 12: GALVESTON COUNTY MASTER GARDENER FALL PLANT SALE, 8-8:50am-Overview; 9am-1pm-Sale. Galveston County Fair Grounds, Jack Brooks Park-Rodeo Arena, Hwy 6 & Jack Brooks Rd, Hitchcock. Free. [galvcountrymgs@gmail.com](mailto:galvcountrymgs@gmail.com) , 281-309-5065, [aggie-horticulture.tamu.edu/galveston/index.html](http://aggie-horticulture.tamu.edu/galveston/index.html)

THURS., OCT. 17: KATY PRAIRIE UPDATE by WESLEY NEWMAN, 6:45-8:30pm; American Red Cross, 27000 Southwest Fwy. Free. Native Plant Society of Texas/Houston Chapter event.npsot.org/Houston

Sat., OCT 19:: TEXAS ROSE RUSTLERS FALL CUTTINGS EXCHANGE & Q&A by DR. WILLIAM C. WELCH & GREG GRANT , 9am-3pm, St. Paul's Episcopal Church, 414 E. McAlpine St., Navasota. Free. [texasroserustlers.com](http://texasroserustlers.com)

SAT. NOV 2, TEXAS ARBOR DAY, 1pm – 4pm, Mercer Botanic Gardens, West Side Arboretum, 22306 Aldine-Westfield, Humble. Free. 713-274-4160.

WED. NOV. 13, GARDENS, noon – 2pm, featuring gardens depicted in the collections of the Museum of Fine Arts, Houston, *Mercer Botanic Gardens* , 22306 Aldine-Westfield, Humble. Free. Register: 713-274-4160.

SAT. DEC. 14, 2019: CHAPPELL HILL GARDEN CLUB CHRISTMAS HOME TOUR, 10am-5pm., Chappell Hill. \$20 advance/\$25 tour day. 713-562-6191; 979-337-1200

If we inspire you to attend any of these,  
please let them know you heard about it in . . .

**THE LAZY GARDENER & FRIENDS NEWSLETTER!**  
& please patronize our Newsletter & Calendar sponsors below!

PLEASE READ BEFORE

SUBMITTING AN EVENT FOR THIS CALENDAR. \_

Events NOT submitted in the EXACT written format below may take two weeks or longer

to be reformatted/retyped. After that point, if your event does not appear, please email us.

Sorry, no children's programs. - Submit to: [lazygardener@sbcglobal.net](mailto:lazygardener@sbcglobal.net) \_

**THIS NEWSLETTER IS MADE POSSIBLE  
BY THE FOLLOWING SPONSORS**

If you are interested in becoming a sponsor, please contact us at 936-273-1200 or send an e-mail to: [lazygardenerandfriends@gmail.com](mailto:lazygardenerandfriends@gmail.com)



COMPOST TOP DRESSING  
LAWN, TREE, & BED FERTILIZATION

# YearRound

Organic Fertilizers  
Core Aeration  
Compost Top Dressing  
[YearRoundHouston.com](http://YearRoundHouston.com)



[www.bartlett.com](http://www.bartlett.com)



## About Us

## BRENDA BEUST SMITH

WE KNOW HER BEST AS THE LAZY GARDENER . . .

. . . but Brenda Beust Smith is also:

- \* a national award-winning writer & editor
- \* a nationally-published writer & photographer
- \* a national horticultural speaker
- \* a former Houston Chronicle reporter

When the Chronicle discontinued Brenda's 45-year-old Lazy Gardener" print column, it then ranked as the longest-running, continuously-published local newspaper column in the Greater Houston area.

Brenda's gradual sideways step from Chronicle reporter into gardening writing led first to an 18-year series of when-to-do-what Lazy Gardener Calendars, then to her Lazy Gardener's Guide book which morphed into her Lazy Gardener's Guide on CD. which she now emails free upon request.

A Harris County Master Gardener, Brenda has served on the boards of many Greater Houston area horticulture organizations and has hosted local radio and TV shows, most notably a 10+-year Lazy Gardener specialty shows on HoustonPBS (Ch. 8) and her call-in "EcoGardening" show on KPFT-FM.

For over three decades, Brenda served as as Production Manager of the Garden Club of America's BULLETIN magazine. Although still an active horticulture lecturer and broad-based freelance writer, Brenda's main focus now is THE LAZY GARDENER & FRIENDS HOUSTON GARDEN NEWSLETTER with John Ferguson and Pablo Hernandez of Nature's Way Resources.

A native of New Orleans and graduate of St. Agnes Academy and the University of Houston, Brenda lives in Aldine and is married to the now retired Aldine High School Coach Bill Smith. They have one son, Blake.

Regarding this newsletter, Brenda is the lead writer, originator of it and the daily inspiration for it. We so appreciate the way she has made gardening such a fun way to celebrate life together for such a long time.

## JOHN FERGUSON

John is a native Houstonian and has over 27 years of business experience. He owns Nature's Way Resources, a composting company that specializes in high quality compost, mulch, and soil mixes. He holds a MS degree in Physics and Geology and is a licensed Soil Scientist in Texas.

John has won many awards in horticulture and environmental issues. He represents the composting industry on the Houston-Galveston Area Council for solid waste. His personal garden has been featured in several horticultural books and "Better Homes and Gardens"



magazine. His business has been recognized in the Wall Street Journal for the quality and value of their products. He is a member of the Physics Honor Society and many other professional societies. John is the co-author of the book Organic Management for the Professional.

For this newsletter, John contributes articles regularly and is responsible for publishing it.

### **PABLO HERNANDEZ**

Pablo Hernandez is the special projects coordinator for Nature's Way Resources. His realm of responsibilities include: serving as a webmaster, IT support, technical problem solving/troubleshooting, metrics management and quality control.

Pablo helps this newsletter happen from a technical support standpoint.



**Confirm that you like this.**

Click the "Like" button.