



AUGUST 1, 2015

Dear Friends,

Here is the 118th issue of our weekly gardening newsletter for Houston, the Gulf Coast and beyond. We really appreciate all of our readers hanging in there with us, sharing stories and inspiring us in so many ways.

Thanks so much!

This newsletter is a project of The Lazy Gardener, Brenda Beust Smith and John Ferguson. (John is with Nature's Way Resources). We also have a great supporting cast of contributing writers and technical specialists who will chime in and tweak away regularly. We would love to keep receiving your input on this newsletter . . . comments . . . suggestions . . . questions. . . Email your thoughts to: lazygardenerandfriends@gmail.com. Thanks so much for your interest.

Please or sign yourself up to receive this newsletter by clicking the "Join Our Mailing List" link just below. We will never sell or share our mailing list to protect the privacy of our subscribers.

Enjoy!

[Join Our Mailing List!](#)



SOAKING SURRENDER . . . REEK NEVER PEAKED . . . NURSERY MARKETING TRENDS

BY BRENDA BEUST SMITH

Ah, our changing times. For decades Husband has been trying to get me to lay soaker hoses in the gardens. I can't, I said. I am The Lazy Gardener! Lazy gardeners don't water. Lazy gardeners use only plants that can survive no matter how bad the drought, no matter how hot the weather.

Occasionally I'd walk around the yard, hose in hand, pointing the nozzle down at the base of plants that really looked parched. No point, I figured, in watering weeds. Or plants that weren't

wilted.

My policy was to only water those plants that looked like they needed watering, i.e., wilted in the morning as well as at night. [See July 20 column.](#)

Not only do some plants wilt on purpose in the heat of the afternoon to reduce moisture evaporation, others will actually go dormant. St. Augustine is one - unless you water constantly, which - with water restrictions spreading - may not be an option much longer.

These plants usually are not dead. It's like winter dormancy. They can't cope with the weather (heat or cold), so they just shut down for a while. Problem is - how do you know? We lazy gardeners know because we ignore the plants that look dead and learn the truth when they do (or don't) come back out when our fall rains arrive.

But gotta admit. This increasingly warm weather is taken its toll on me too. Too many plants, normally super hardy plants, aren't totally pepping back up in the morning. Even after all that rain we had earlier this year.

So I gave in. We laid soaker hoses in all the gardens in the backyard (pictured under my indigo plant - usually very hard! - at top left).

Many options for soaker hoses are now available. I opted for the type that has holes on the bottom side of a flat hose. This we laid holes-down. The way I see it, the less water that is exposed to hot air, the less will be lost to evaporation. And, the deeper water can be forced down into a single spot the better.

Roots will be drawn to water and they need to be lured downward, not up to the soil surface as light watering will do. Our plan is to nightly move the hose to a different garden and leave it on while we sit outside, which we do every evening. Now all we have to do is to remember to turn it off.

Right. To be on the safe side, I set the kitchen timer with a note that says: **TURN OFF THE SOAKER HOSE!**

* * *

REEK NEVER PEAKED. Houston Zoo's horticulture team is sad about all this heat too. Reek is their corpse flower and it looked for a while like they were going to have Houston's second fabulous bloom display of the plant known best for its stinky smell. But the heat did Reek. He wasn't able to produce a full bloom. So sad.

A native of Indonesian rainforests, *Amorphophallus titanium* has the largest inflorescence (complete flower head) in the world.

If you missed the one that bloomed in 2010 at the Houston Museum of Natural Science, this was going to be your second chance to see this incredible pollinator (*Told you we'll be hearing that word a lot from now on!*). Its bloom warms up to 100° F during flowering to help carry the smell for up to 1/2 a mile to attract flies and carrion beetles. Yum.

The Zoo's corpse developing bloom grew over 40" high before it began to fade. It can take four to 10 years for a plant to produce another flower. The good news is that the plant itself didn't succumb, altho the intense heat did in the budding flower.

They've kept up a running blog on its progress. Your posted kind words of sympathy will, I'm sure, be greatly appreciated on Reek's blog: <http://www.houstonzoo.org/our-corpse-flower-is-alive/>



Left, taking daily measurements of Reek the Corpse Flower is Houston Zoo Horticultural Team member Alyssa Schultx (that's Mark Tidwell in the photo at column top). Center, the Houston Museum of Natural Science's corpse flower did bloom in 2010. Right, as nurserymen see us customers: "...put what's blooming right now directly in front of them (and) ... they will buy it."

IF YOU'RE NEW TO GARDENING IN THIS AREA AND YOUR PLANTS ARE ACTUALLY DYING (not just going summer dormant) . . . chances are you've picked the wrong plants.

My best advice is to take advantage of our local resources to learn about plants that do well here. The Greater Houston area is a somewhat unique little subtropical pocket, closer in ecology to southern Louisiana than to any other part of Texas. We are VERY different from the Austin area, for example, in that we have gumbo clay soil, drainage problems they don't have and (usually) much heavier rains.

Our winters are warmer and shorter than, say, the Dallas area, so we can grow many more plants as perennials than they can. And they can grow many more plants that require winter cold than we can.

Many of our best, hardiest plants are coming up from Mexico and points south.

Where do we get these plants? We learn about them from local experts, like those at events listed in our calendar below. And we get to know our independent local neighborhood nurseryman.

Your local neighborhood nurseryman should be one of your best friends. He not only shares our growing problems (insects and disease invading in our area), he wants and needs our repeat business. It's in his best interest, and ours, to supply us with plants that are best for our specific ecology - and there are so many different ones in the Greater Houston area. Our landscape successes are crucial to his business' survival.

Customer profiles differ from area to area, of course. But recently ran across a fascinating national look at us as nursery consumer. Most of us still buy our plants and gardening supplies from local retailers, rather than online. Ever wonder how we're viewed by the folks who are selling to us?

This interview appeared in the newsletter ["GREEN TRENDS - Horticulture Updates](#) from Texas A&M AgriLife Extension Harris County"

Here's the view of Illinois nursery owner David Christakes and industry consultant Sid Raisch:

- 1. More 25-year-olds than ever are shopping in nurseries (not online)**
- 2. They aren't particularly loyal to a certain nursery.**
- 3. The "silent generation" (us older folks) is disappearing as nursery customers, and the Baby Boomers aren't far behind.**

But this is the interesting part. They say these younger customers "...don't want to feel intimidated by some green thumb expert. They want someone like them who has faced the same challenges they have and can show them a path to where they want to be with their landscape."

Nursery owner David thinks it is easier to sell to the younger generation (than to those of us of a more mature age). "You just put what's blooming right now directly in front of them. If it's colorful and beautiful, they will buy it."

The key, industry consultant Sid says, is to hire staff who know these kids. Then listen to what they say. David explains, "I am looking for the guys from the movie *The Internship*. I'm not looking for a master gardener or a certified horticulturist. Plant knowledge is fine, but you don't have to know plants to sell shrubs. You have to know people, and the plant knowledge can follow. I'm looking for people who know how to communicate a specific message to other people."

(What? Like "Buy This Plant 'cause It's Pretty - Not Because It's a Good Plant for YOUR Garden"?)

Is that scary or what?)

What's selling? Anything to do with butterflies and other pollinators (there's that word again!). One catch: bees. Folks are still a little apprehensive about bees, although that's visibly changing. An increasing number of customers know, and care, that all pollinators and habitats work together as part of one big cocoon and that bees are essential for our food supply.

Overall, they agree, buying plants is definitely "back in style," especially with the increasing flow of younger customers. You can read the entire interview at <http://www.todaysgardencenter.com/business-management/state-of-the-industry-2015-younger-shoppers-are-a-growing-force/>

THE FRUSTRATING PART ABOUT THE INFO ABOVE is that we apparently will buy any plant with colorful flowers. This is completely marketing brainwashing. These are NOT the healthiest of plants to buy. Plants are treated with hormones to make them bloom in the first place, to bloom on uniformly-sized plants and then to hold their blooms as long as possible on the nursery shelf.

That means you're taking home a plant that's already in a weakened condition. It may do great, or it may not. Either way, it's probably not your fault if it doesn't.

But, as consumers (and the growers know this all too well), we have a tendency to say, "Oh, I killed it!" - not to think about what was done to that plant in order to force those beautiful blooms that made you buy it.

When you find a plant you love, use the display blooms to pick your colors. Then actually buy those with NO flowers or buds on them. What's happened you can almost be positive is that the plant has bloomed and dead blooms cut off. So, for a while at least, the plant has been allowed to focus its energies producing healthy roots - the key to a plant's long-term survival.

One more reason to shop your local independent nurseryman who needs you to happy and return for more purchases.

** Brenda's "LAZY GARDENER'S GUIDE" - a when-to-do-what in Greater Houston area gardens - is now available on CD only (pdf file). \$20. Checks payable to Brenda B. Smith and mailed to: Lazy Gardener's Guide on CD, 14011 Greenranch Dr., Houston, TX 77039-2103. For a free page of this month's TO-DO list, email Brenda at lazygardener@sbcglobal.net*

JOHN'S CORNER

WEEDS and HERBICIDES (Part 3)



"Round-Up"

Today I want to look at the consequences of using Round-Up and Round-Up ready Genetically Modified crops.

Scientists at the University of Caen in France found that human placental cells are very sensitive to this herbicide at concentration levels lower than used in agriculture and that it disrupts human sex hormones and leads to reproductive problems. Environmental Health Perspectives, June 2005, "Differential Effects of Glyphosate and Round-Up on Human Placenta Cells and Aromatase".

Glyphosate herbicides cause genetic damage and harm to the immune systems in fish, and frogs leading to abnormal development. Ecological Applications, April 2006, "The impact of insecticides and herbicides on the biodiversity and productivity of aquatic communities"

A 2007 study conducted by Pontifical University in Ecuador found a higher degree of genetic damage in populations exposed to glyphosate than those whom lived 50 miles away. A 2009 study in the Journal Toxicology, researchers from the University of Caen in France found that in human cells glyphosate disrupted hormones. This was at a level of only 0.5 parts per million (ppm) which is 800 time less than what is found on our food. In 2010 in the Journal Chemical Research in Toxicology another *low-dose* study found that glyphosate exposure caused malformations in frog and chicken embryos.

A 2012 review of several studies by the King's College London School of Medicine found evidence that Round-Up caused birth defects.

Another of the claims of safety is that glyphosate targets an enzyme (EPSP synthase) that does not exist in humans. However, this enzyme is present in the bacteria that live inside people. These bacteria are intimately linked to many physiological functions in the body that are crucial to human health. This disruption has been linked to many illnesses. Monsanto's claim that glyphosate only targets one enzyme is false as it was originally patented in 1964 as a enzyme disrupter. Additionally many metals are co-factors for many enzymes and the enzyme cannot work without them. Hence the chelating properties of glyphosate locks up these metals and prevent the enzymes from working.

A report in the Health Freedom Alliance stated that an estimated one Billion pounds a year of Round-up is sprayed on our food crops. This results in the average American eating several hundred pounds of glyphosate-contaminated food every year!

Dr. Samsel a research chemist whom helped author the Chemical Hazard Response Information System (CHRIS) manual for the US Coast Guard. He was also a farmer whom used Round-Up. He began to question the safety of glyphosate when he noticed his own urine killed plants. He went on a diet of only organic foods and the herbicidal effect of his urine went away. He convinced the USDA to release the results from over 400 samples of soybeans that were tested where over 90% of them had glyphosate residues on them. He also noticed that the data had been "cherry picked" by the USDA so that EPA limits for safety were not exceeded. The report also ignored the very toxic breakdown product of glyphosate (AMPA) which was found at higher levels than the glyphosate.

Dr. Samsel also found out that glyphosate had also been patented as an biocide and a antibiotic. During his research into glyphosate he found that Monsanto knew as far back as 1981 that it was carcinogenic in animal studies. A paper by the Health Freedom Organization may be found at www.healthfreedom.org/researcher-reveals-monsanto-has-knowledge.

A recent study in the Surgical Neurology International found that on cows fed genetically modified Round-Up ready feed, they developed a severe depletion of serum Manganese (Mn) which prevented many biological systems from working properly.

Other studies have Round-Up linked to many human health problems. A study in the journal Entropy found Round-Up exposure linked to the development of Parkinson's disease.

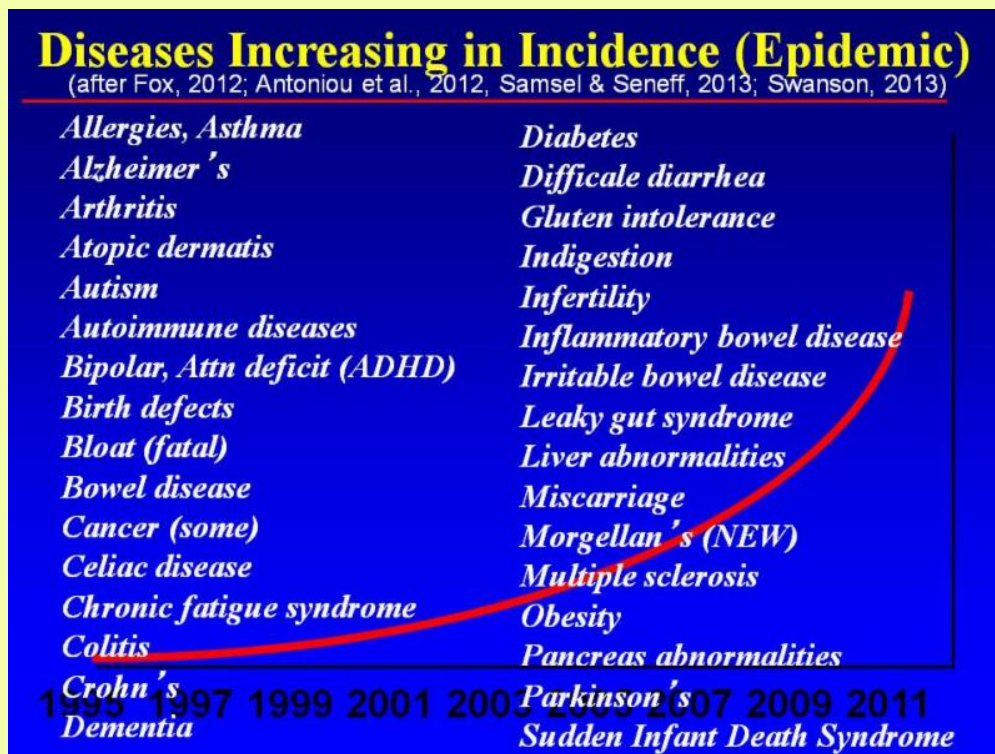
Researchers at the Massachusetts Institute of Technology (MIT) over the last couple years

in multiple published studies have linked Round-Up exposure to gastrointestinal disorders, obesity, diabetes, heart disease, depression, infertility, autism, cancer and Alzheimer's disease.

One of the promises (lies) of GMO crops was less chemical usage would be required. In the U.S. in 1992 only 11,000 tons of glyphosate were applied. In 2007 it had increased to 88,000 tons! Today it is estimated that hundreds of thousands of tons are used. This means more people are exposed to a carcinogenic chemical in greater amounts.

So what has happened since the introduction of Round-UP ready GMO foods?

Below are some of the slides shown at the soil conference, summarizing hundreds of published research studies linking Round-Up to health problems.



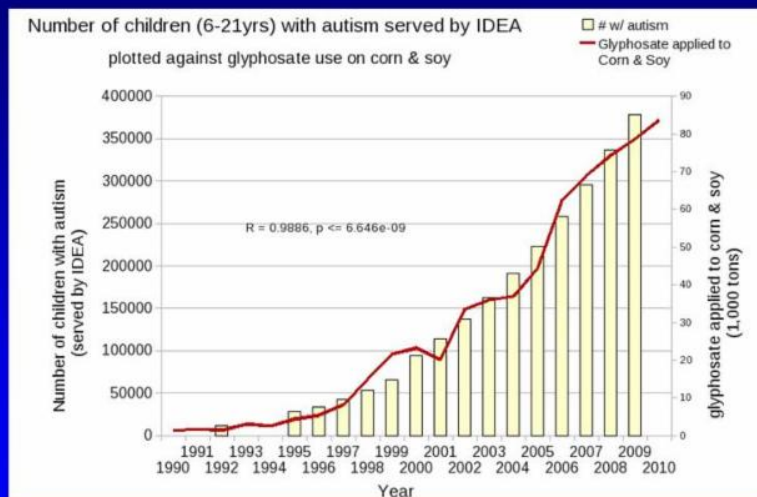
Many health problems have increased in direct proportion to the increased usage of Glyphosate.

Direct Toxicity of Glyphosate

Rate (ppm)	System affected	Reference
0.5	Human cell endocrine disruption	Toxicology 262:184-196, 2009
0.5	Anti-androgenic	Gasner et al, 2009
1.0	Disrupts aromatase enzymes	Gasnier et al, 2009
1-10	Inhibits LDH, AST, ALF enzymes	Malatesta et al, 2005
1-10	Damages liver, mitochondria, nuclei	Malatesta et al, 2005
2.0	Anti-Oestrogenic	Gasnier et al, 2009
5.0	DNA damage	Toxicology 262:184-196, 2009
5.0	Human placental, umbilical, embryo	Chem.Res.Toxicol.J. 22:2009
10	Cytotoxic	Toxicology 262:184-196, 2009
10	Multiple cell damage	Seralini et al, 2009
10	Total cell death	Chem.Res.Toxicol.J. 22:2009
All	Systemic throughout body	Andon et al, 2009
1-10	Suppress mitochondrial respiration	Peixoto et al, 2005
	Parkinson's	El Demerdash et al, 2001
	POEA, AMPA even more toxic	Seralini et al, 2009

It is amazing how the increased health problems directly correlate to Round-Up application.

Glyphosate and Autism*



Pearson Correlation Coefficient = 0.99

*Dr. Nancy Swanson, <http://www.examiner.com/article/data-show-correlations-between-increase-neurological-diseases-and-gmos>

Look at the tumors that developed when the mice were fed GMO corn!

Chronic Toxicity of GMO Crop or Roundup®

GMO and/or Roundup cause adverse health effects

50% males & 70 % females died prematurely

(Tumors developed after 4-7 months vs 23 mo in control)

Females = 2-3 X mammary tumors & pituitary disorders

Males = kidney & skin tumors, liver & kidney damage

All GMO and RU had digestive disorders

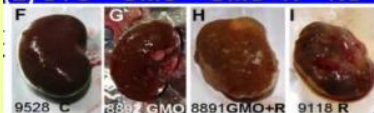
Livers (L) UTC; (R) GMO+R



Mammary cancer: GMO, GMO+RU, RU @ (1 ppb)



Kidney damage (below)
(L) UTC GMO GMO+R RU



Glyphosate in Human Breast Milk Mom' S Across America Study - 2014

Glyphosate Concentration (PPB)

Urine U.S.	Europe	Breast Milk	Drinking Water (MCL)		5 % Increase ^x in	
			U.S.	Europe	Birth Defects	Mis- carriage
18.8	0.16	76-166	700	0.70	0.028*	0.048**

*PPM, had 0.2 PPM in feed

**PPM, had PPM 1.1 PPM in feed

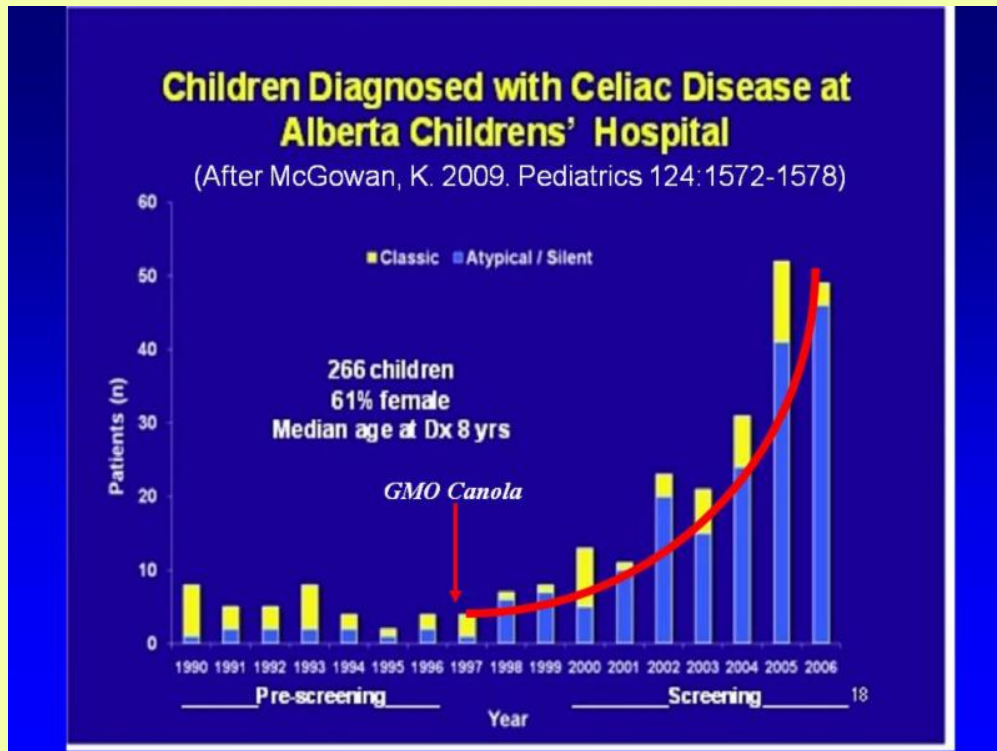
^xPig study

From 10-400 PPM permitted in
food products

0.1 PPM toxic to beneficial GI
microbials



What is the Glyphosate in Round-Up doing to our children?



There is a definite correlation of when genetically modified canola was introduced in Canada and the increase of the disease.

Direct Toxicity of Glyphosate		
Rate (ppm)	System affected	Reference
0.5	Human cell endocrine disruption	Toxicology 262:184-196, 2009
0.5	Anti-androgenic	Gasner et al, 2009
1.0	Disrupts aromatase enzymes	Gasnier et al, 2009
1-10	Inhibits LDH, AST, ALF enzymes	Malatesta et al, 2005
1-10	Damages liver, mitochondria, nuclei	Malatesta et al, 2005
2.0	Anti-Oestrogenic	Gasnier et al, 2009
5.0	DNA damage	Toxicology 262:184-196, 2009
5.0	Human placental, umbilical, embryo	Chem.Res.Toxicol.J. 22:2009
10	Cytotoxic	Toxicology 262:184-196, 2009
10	Multiple cell damage	Seralini et al, 2009
10	Total cell death	Chem.Res.Toxicol.J. 22:2009
All	Systemic throughout body	Andon et al, 2009
1-10	Suppress mitochondrial respiration	Peixoto et al, 2005
	Parkinson's	El Demerdash et al, 2001
	POEA, AMPA even more toxic	Seralini et al, 2009

In addition to the human and livestock health effects, Round-Up has also been linked to the decline in Monarch butterflies, as their primary food source (milkweeds) are very sensitive to this herbicide. It has also been linked to the decline in bees. It is now believed to weaken their immune systems which makes them more susceptible to other factors and together it leads to colony collapse disorder.

How did this happen to people? It started back during the early 80's when GMO technology was in its infancy. The problems took off in 1991 when the White house hired Michael Taylor a Monsanto attorney to oversee the creation of GMO policy for the FDA. He then went back to work for Monsanto as Vice-President for Public Policy from 1996-2000 when he was appointed the FDA's Food Safety Czar. As a result the FDA approves GM foods based on industry studies and does no independent testing.

Note: Most industry test are 90 days or less with NO Long Term Studies.

I am currently reading an very interesting book: Altered Genes, Twisted Truth, by Steve Druker, copyright 2015, that I will review when I am finished. He was an attorney representing an environmental organization that filed suit on the USDA. As a result the courts gave him access to all the internal documents from the USDA and other agencies that showed that they knew the dangers of GMO's and how our government covered them up.

Round-Up is in all of our food supply of conventionally grown food. That is why well over 90% of Americans want foods containing GMO ingredients labeled. I read this morning that 64 nations now require labeling of GMO foods. With labeling we have "freedom of choice" to purchase GMO foods or not.

The slide below illustrates how easy it is for consumers to ingest Glyphosate as it now contaminates our food supply. This is another reason why gardeners need to organically raise as much of their own fruits and vegetables as they can.

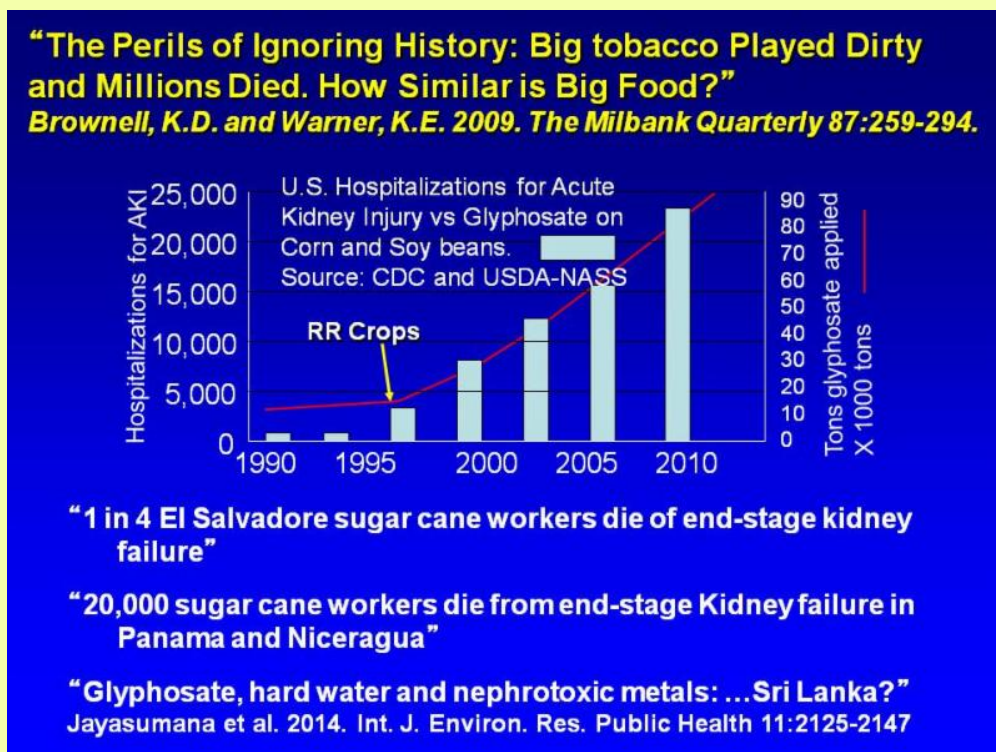


Due to the properties of Glyphosate there has been a tremendous reduction in the nutrient content of our foods. As a result we have to eat more food to get the minerals our bodies need. The consequence is that we consume many times the calories that we need which leads to fat and diseases like diabetes.

I remember reading a study 10-12 years ago based on USDA data that just due to hybridization, we have to eat 3 1/2 ears of corn to get the same amount of nutrition that one ear of corn had in 1903. We consume calories that make us fat but not nutrition to make us healthy. We have developed a agricultural system that rewards agribusiness based on quantity not quality.

The slide below illustrates the reduction in essential nutrients in crops by just Round-Up.

What can we as individuals do? Many states have passed or started the process to pass GMO labeling laws to protect their citizens since the USDA and EPA are not protecting us and are under the control of the giant agri-business companies.



In congress there is a bill (H.R. 1599) known as the "DARK act" (Deny Americans the Right to Know Act). It has passed the US House of Representatives and *prohibits states or other government agencies from passing bills that require labeling and protects citizens*. I was amazed that 275 of our representatives whom report to the agribusiness companies (they no longer represent the people that elected them) have voted for it. By party there were 45 Democrats and 230 Republicans that voted for it. There is a summary of the act at: <http://www.takepart.com/article/2015/07/23/house-votes-gmo-safety>

The New York Times had an article listing how politicians voted if you want to find out how your

representative voted: <http://politics.nytimes.com/congress/votes/114/house/1/462>

What scares me the most about this bill is that it takes away one of our most important civil liberties, "Freedom of Choice". Without labeling there is no choice and the only way to protect our families is to purchase organic foods. So what comes next if this encroachment on civil liberties is allowed to stand, "freedom of speech" or "freedom of the press" or "freedom to worship as we choose"?

God tells us in the Bible to "Love our neighbor as ourselves". This means we do not do things that harm them. In the book of James we are told "Faith without works is dead". When we purchase and use products like Round-Up or when we purchase GMO foods we are harming our families and neighbors and we are in direct violation of God's commandments, hence we suffer the consequences as shown above.

Thirty years ago we thought we were doing something good and useful by using Round-Up. However, we now know the dangers and can make better choices therefore there is no excuse.

WEEKLY GARDENING EVENTS & ANNOUNCEMENTS CALENDAR

TO SUBMIT EVENTS: _____

Find a similar event in our calendar below and copy the format EXACTLY.
Then you can add additional information. Email to lazygardener@sbcglobal.net
Not using our format will result in a delay in publication.
Events will not be picked up from newsletters.

SAT., AUG. 1: BACKYARD GARDENING - STRAWBERRIES BY ROBERT MARSHALL, 9-11am, Galveston County AgriLife Extension in Carbide Park, 4102 Main, La Marque. Free. Master Gardener event. Reservations to galv3@wt.net. Details: www.aggie-horticulture.tamu.edu/galveston; 281-534-3413

SAT, AUG. 1: CONSTRUCTING THE HOME VEGETABLE AND FRUIT GARDEN, 9-11:30am, University of St. Thomas, Strake Hall, Room 207, 3918 Yoakum Blvd., \$45. Urban Harvest event. Details: [713-880-5540](tel:713-880-5540) or www.urbanharvest.org.

SAT., AUG. 1: WHITE LINEN NIGHT, 6-9 pm, Buchanan's Native Plants, 611 East 11th Street, free, Details: www.buchanansplants.com/calendar/events

MON., AUG. 3: OPEN GARDEN DAY & PLANT SALE WITH HARRIS COUNTY MASTER GARDENERS AT PRECINCT 2, 8:30-11am, Genoa Friendship Garden, 1202 Genoa Red Bluff Rd. Free. Details: <http://hcmga.tamu.edu>

TUES., AUG 4: ALL ABOUT HUMMINGBIRDS (children), 9am-12:30pm, The Arbor Gate, 15635 FM 2920, Tomball. Free. Details: www.arbortgate.com or 281-351-8851

SAT., AUG. 8: THE GREAT PEPPER EXTRAVAGANZA - SEMINAR & TASTING, 9am-noon, , Galveston County AgriLife Extension in Carbide Park, 4102 Main, La Marque. Free. Master Gardener event. Reservations to galv3@wt.net. Details: www.aggie-horticulture.tamu.edu/galveston; 281-534-3413

SAT., AUG. 8: PROPAGATE YOUR OWN PLANTS, 9-11:30am, University of St. Thomas, Strake Hall, Room 207, 3918 Yoakum Blvd., \$45. Urban Harvest event. Details: [713-880-5540](tel:713-880-5540) or www.urbanharvest.org.

SAT., AUG. 8: GROWING GREAT FALL VEGETABLES & TOMATOES BY GARY EDMONDSON, 10 am, Buchanan's Native Plants, 611 East 11th Street, free, Details: www.buchanansplants.com/calendar/events

SAT., AUG. 10: HUG'S SEMI-ANNUAL SEED SWAP AND "WHAT TO PLANT AND DO NOW" BY TOMMY GARCIA-PRATS, Seed Swap: 5:30-6:30pm, lecture follows, Moody Park Community Center, 3725 Fulton. Free. Houston Urban Gardeners event. Details: www.houstonurbangardeners.org.

TUES., AUG. 11: SOIL FOOD WEB - LATEST ADVANCES IN SOIL BIOLOGY BY ELAINE INGHAM, Ph.D., 8am-4pm, Museum of Natural Science, 1 Hermann Circle. Organic Horticultural Benefit Alliance (OHBA) event. Fee, Register at: www.ohbaonline.org

TUES., AUG. 11: ADVANCES IN SOIL BIOLOGY BY DR. ELAINE INGHAM, 8am-4pm, Houston Museum of Natural Sciences, 1 Hermann Park Circle. Organic Horticulture Benefits Alliance (OHBA) & Houston Museum of Natural Sciences event. Register: www.ohbaonline.org or facebook.com/OHBAonline

THURS., AUG. 13: WATERING SYSTEMS BY BAXTER WILLIAMS, 7:30pm, St. Andrews Episcopal Church parish hall, 1819 Heights Blvd. Free. Houston Rose Society event. Details: www.houstonrose.org

SAT., AUG. 15: STARTING A COMMUNITY OR SCHOOL GARDEN WORKSHOP, 8:30am-2pm, University of St. Thomas, Robertson Hall, Room 116, 3918 Yoakum Blvd., \$20. Urban Harvest event. Details: [713-880-5540](tel:713-880-5540) or www.urbanharvest.org.

SAT., AUG. 15: EDIBLE CONTAINER GARDEN WORKSHOP BY URBAN HARVEST, 10 am, Buchanan's Native Plants, 611 East 11th Street, Pay for the supplies you use., Details: www.buchanansplants.com/calendar/events

SAT., AUG. 15: POLLINATORS - WINGS OF LIFE MOVIE, 10:30-11:40am, University Branch Library, 14010 University Blvd., Sugar Land. Free. The Great Grow, Children's Organic School Garden event. Details: www.TheGreatGrow.com or [713-724-3113](tel:713-724-3113)

MON., AUG. 17: OPEN GARDEN DAY & PLANT SALE WITH HARRIS COUNTY MASTER GARDENERS AT PRECINCT 2, 8:30-11am, Genoa Friendship Garden, 1202 Genoa Red Bluff Rd. Free. Details: <https://hcmga.tamu.edu>

TUES., AUG. 18: FALL VEGETABLE GARDENING BY BOB DAILEY, 5:30-7:30pm, South Regional Branch Library, 2101 Lake Robbins Drive, The Woodlands. Free. Montgomery County Master Gardeners event. Details: [936-442-7727](tel:936-442-7727).

WED., AUG. 19: BEGONIAS BY TONY COLLINS, 10am, Clear Lake Park Meeting Room, 5001 NASA Parkway, Seabrook. Free. Harris County Master Gardeners at Precinct 2. Details: <https://hcmga.tamu.edu>

THURS., AUG. 20: PLANTING FOR THE HOUSTON TOAD AND OTHER LOCAL AMPHIBIANS BY Dr. CASSIDY JOHNSON. 7-9pm. Houston Arboretum and Nature Center, 4505 Woodway. Free. Native Plant Society of Texas - Houston Chapter event. Details: npsot.org/wp/houston/activities/monthly-meetings/

SAT., AUG. 22: THE PATIO GARDEN BY TOM LEROY, , 9-11am, Galveston County AgriLife Extension in Carbide Park, 4102 Main, La Marque. Free. Master Gardener event. Reservations to galv3@wt.net. Details: www.aggie-horticulture.tamu.edu/galveston; 281-534-3413

SAT., AUG. 22: RAINWATER HARVESTING FOR HOMEOWNERS, 9-11:30am, University of St. Thomas, Strake Hall, Room 207, 3918 Yoakum Blvd., \$45. Urban Harvest event. Details: [713-880-5540](tel:713-880-5540) or www.urbanharvest.org.

SAT., AUG. 25: STARTING A COMMUNITY OR SCHOOL GARDEN WORKSHOP, 8:30am-2pm, University of St. Thomas Robertson Hall, Room 116, 3812 Yoakum Blvd. \$20. Urban Harvest event. Registration required. Details: www.urbanharvest.org/classes-calendar or [713-880-5540](tel:713-880-5540).

SAT., AUG. 29: SUCCESSFUL FALL VEGETABLE GARDENING BY LUKE STRIPLING, 9-11:30am, Galveston County AgriLife Extension in Carbide Park, 4102 Main, La Marque. Free. Master Gardener event. Reservations to galv3@wt.net. Details: www.aggie-horticulture.tamu.edu/galveston; 281-534-3413

SAT., AUG. 29: ALL ABOUT HERBS, 9-11am, University of St. Thomas, Strake Hall, Room 207, 3918 Yoakum Blvd., \$45. Urban Harvest event. Details: [713-880-5540](tel:713-880-5540) or www.urbanharvest.org.

SAT, AUG. 29: GROWING TOMATOES & PEPPERS BY ANGELA CHANDLER, 10 am, Buchanan's Native Plants, 611 East 11th Street, free, Details: www.buchanansplants.com/calendar/events

TUES., SEPT. 1: PRE-ORDER BULB DEADLINE FOR THE OCT. 1-3 2015 BULB & PLANT MART. Details: www.gchouston.org, 713-683-9450 or cgerikson99@gmail.com

THURS., SEPT. 3: ENJOYING A NIGHT BLOOMING GARDEN BY JUDY ULKE, 9:30 am at the Municipal Utility Building, 805 Hidden Canyon Drive, Katy. Free. Nottingham Country Garden Club Program. Details at nottinghamgardenclub.org or 832-390-7321

SAT., SEPT. 5: BEST TREES & SHRUBS FOR TEXAS, 10:15am, Cornelius Nursery, 2233 S. Voss Road; free. Details: www.corneliusnurseries.com/events

SAT., SEPT. 12: FALL LAWN CARE, 10:15am, Cornelius Nursery, 2233 S. Voss Road; free. Details: www.corneliusnurseries.com/events

THUR.-SUN., OCT. 15-18: MASTER COMPOSTER PROGRAM, Green Building Resource Center, 1002 Washington Ave. Details: Steve Stelzer, [832-394-9050](tel:832-394-9050), steve.stelzer@houston.tx.gov

SAT., OCT. 3: ART OF FALL LANDSCAPE DECORATING, 10:15am, AND FAMILY DAY! FALL FESTIVAL, 9am-6pm, Cornelius Nursery, 2233 S. Voss Road; free. Details: www.corneliusnurseries.com/events

SAT., OCT. 24: HOUSTON ROSE SOCIETY'S ROSE-A-PALOOZA, Harris County AgriLife Extension Center, 3033 Bear Creek Drive. 10am educational programs; noon - Rose Show. \$30. Details: www.houstonrose.org; suzzieq1971@gmail.com; gayeh@LPM-triallaw.com

**If we inspire you to attend any of these events, please let them know
you heard about it in THE LAZY GARDENER & FRIENDS NEWSLETTER!**

TO SUBMIT EVENTS:

**Find a similar event in our calendar below and copy the format EXACTLY.
Then you can add additional information. Email to lazygardener@sbcglobal.net
Not using our format will result in a delay in publication.
Events will not be picked up from newsletters.**

THIS NEWSLETTER IS MADE POSSIBLE BY THE FOLLOWING SPONSORS



ABOUT US

BRENDA BEUST SMITH

WE KNOW HER BEST AS THE LAZY GARDENER . . .

. . . but Brenda Beust Smith is also:

- * a national award-winning writer & editor
- * a nationally-published writer & photographer
- * a national horticultural speaker
- * a former Houston Chronicle reporter

When the Chronicle discontinued Brenda's 45-year-old Lazy Gardener" print column a couple of years ago, it ranked as the longest-running, continuously-published local newspaper column in the Greater Houston area.

Brenda's gradual sideways step from Chronicle reporter into gardening writing led first to an 18-year series of when-to-do-what Lazy Gardener Calendars, then to her *Lazy Gardener's Guide* book and now to her *Lazy Gardener's Guide* on CD (which retails for \$20. However, \$5 of every sale is returned to the sponsoring group at her speaking engagements).

A Harris County Master Gardener, Brenda has served on the boards of many Greater Houston area horticulture organizations and has hosted local radio and TV shows, most notably a 10+-year Lazy Gardener run on HoustonPBS (Ch. 8)

and her call-in "EcoGardening" show on KPFT-FM.

Brenda recently ended her decades-long stint as Production Manager of the Garden Club of America's **BULLETIN** magazine. Although still an active horticulture lecturer and broad-based freelance writer, Brenda's main focus now is **THE LAZY GARDENER & FRIENDS HOUSTON GARDEN NEWSLETTER** with John Ferguson and Mark Bowen of Nature's Way Resources.

A native of New Orleans and graduate of St. Agnes Academy and the University of Houston, Brenda lives in Aldine and is married to the now retired Aldine High School Coach Bill Smith. They have one son, Blake.

Regarding this newsletter, Brenda is the lead writer, originator of it and the daily inspiration for it. We so appreciate the way she has made gardening such a fun way to celebrate life together for such a long time.

JOHN FERGUSON

John is a native Houstonian and has over 27 years of business experience. He owns Nature's Way Resources, a composting company that specializes in high quality compost, mulch, and soil mixes. He holds a MS degree in Physics and Geology and is a licensed Soil Scientist in Texas.

John has won many awards in horticulture and environmental issues. He represents the composting industry on the Houston-Galveston Area Council for solid waste. His personal garden has been featured in several horticultural books and "Better Homes and Gardens" magazine. His business has been recognized in the Wall Street Journal for the quality and value of their products. He is a member of the Physics Honor Society and many other professional societies. John is the co-author of the book *Organic Management for the Professional*.

For this newsletter, John contributes articles regularly and is responsible for publishing it.

PABLO HERNANDEZ

Pablo Hernandez is the special projects coordinator for Nature's Way Resources. His realm of responsibilities include: serving as a webmaster, IT support, technical problem solving/troubleshooting, metrics management, quality control, and he is a certified compost facility operator.

Pablo helps this newsletter happen from a technical support standpoint.

MARK BOWEN

Mark is a native Houstonian, a horticulturist, certified permaculturist and organic specialist with a background in garden design, land restoration and organic project management. He is currently the general manager of Nature's Way Resources. Mark is also the co-author of the book *Habitat Gardening for Houston and Southeast Texas*, the author of the book *Naturalistic Landscaping for the Gulf Coast*, co-author of the *Bayou Planting Guide* and contributing landscape designer for the book *Landscaping Homes: Texas*.

With respect to this newsletter, Mark serves as a co-editor and periodic article contributor.



COUPON: Nature's Way Resources. 20% off our: Native Soil

Mix. <http://natureswayresources.com/products.html> . (Offer good for retail purchases of this product by the cubic yard at Nature's Way Resources (101 Sherbrook Circle, Conroe TX). Expires 08/10/15.

COUPON: Nature's Way Resources. 25% off our: ROSES. . (Offer good for retail purchases of this product by the cubic yard at Nature's Way Resources (101 Sherbrook Circle, Conroe TX). Expires 08/10/15.